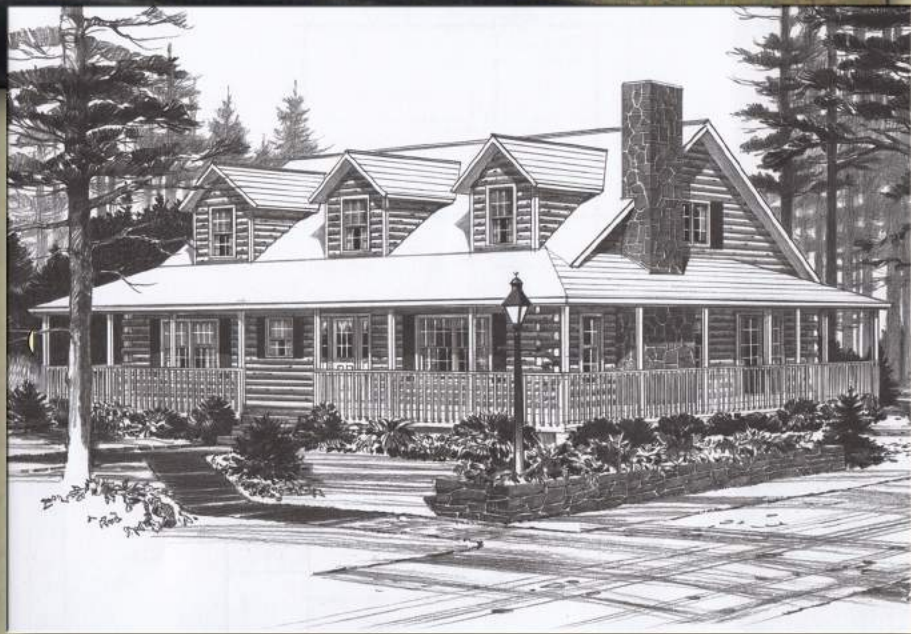




# The Oakridge



Northeastern Log Homes

[info@northeasternlog.com](mailto:info@northeasternlog.com) 800-624-2797 [www.northeasternlog.com](http://www.northeasternlog.com)

\*Artist's rendering, photography and optional design ideas may vary from the standard model. Please always consult the standard floorplan and refer to the Premier Series material list as to what is included.



# The Oakridge

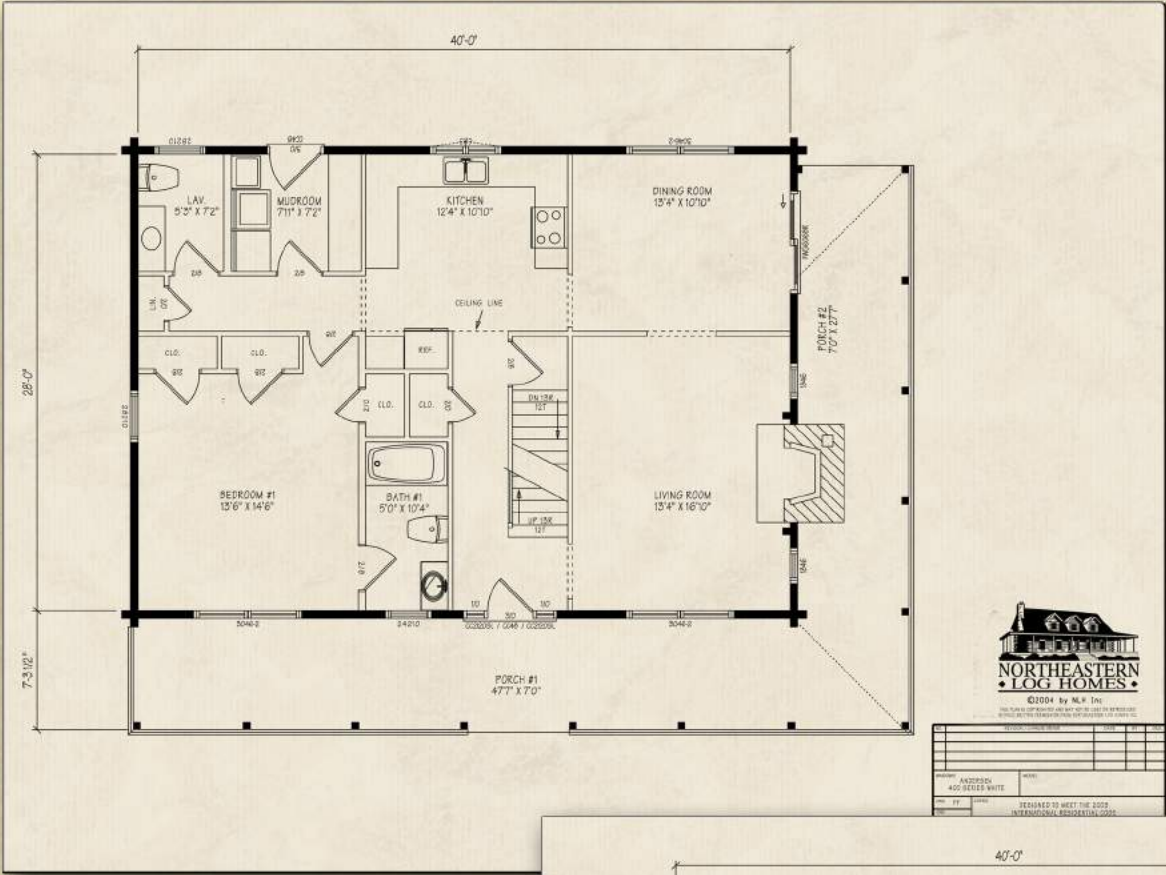
Premier Home Series

-----  
28' x 40' Size

-----  
2,108 Square Feet

-----  
Three Bedrooms

-----  
Two and a Half Baths

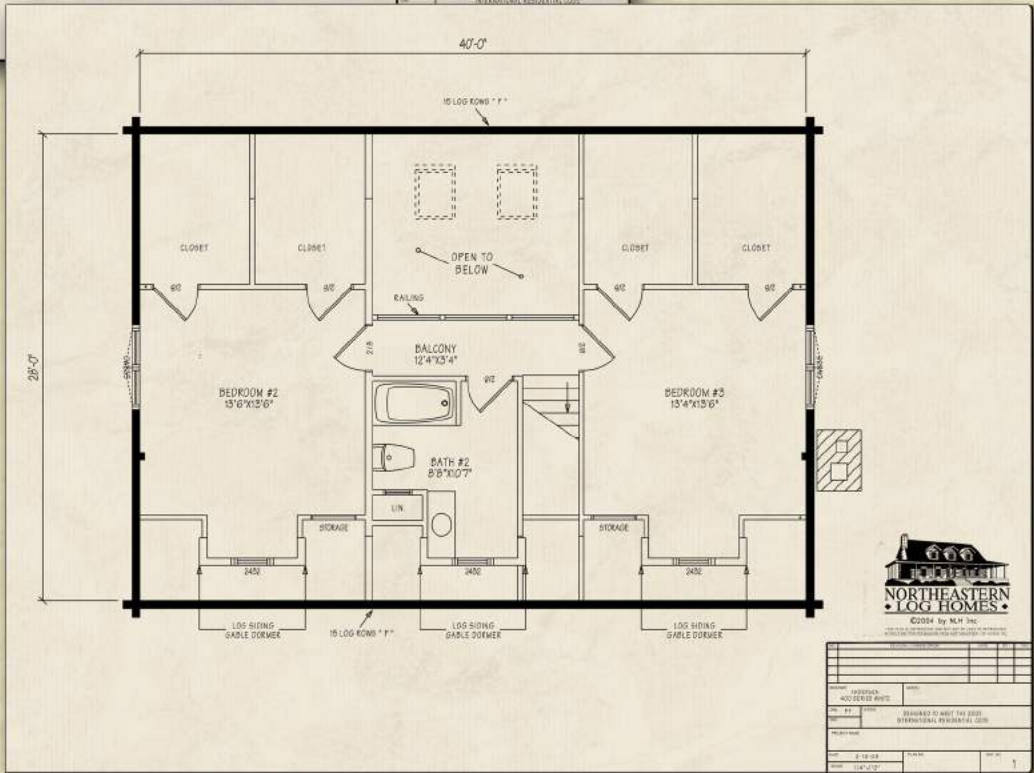


©2004 by N.L.H. Inc.

ADDRESS:	NAME:
405 BERRY WHITE	
PHONE:	DATE:
DESIGNED TO MEET THE 2003 INTERNATIONAL RESIDENTIAL CODES	

**Optional Design Ideas:**

- With built-in shelving, the right side of the laundry area can be utilized as a fantastic walk-in kitchen pantry
- 
- The double closets in the first floor master bedroom can be combined into a single large closet
- 
- Enlarge the area between the dining area and living room for a more open floorplan
- 
- Move the stove and remove the wall at the right of the kitchen to allow for a breakfast bar/peninsula design
- 
- Make bath #1 a 1/2 bath for guests accessible from the hall. Now, both closets just under the ref. area can grow in size AND you can now create a massive first floor master bedroom suite!



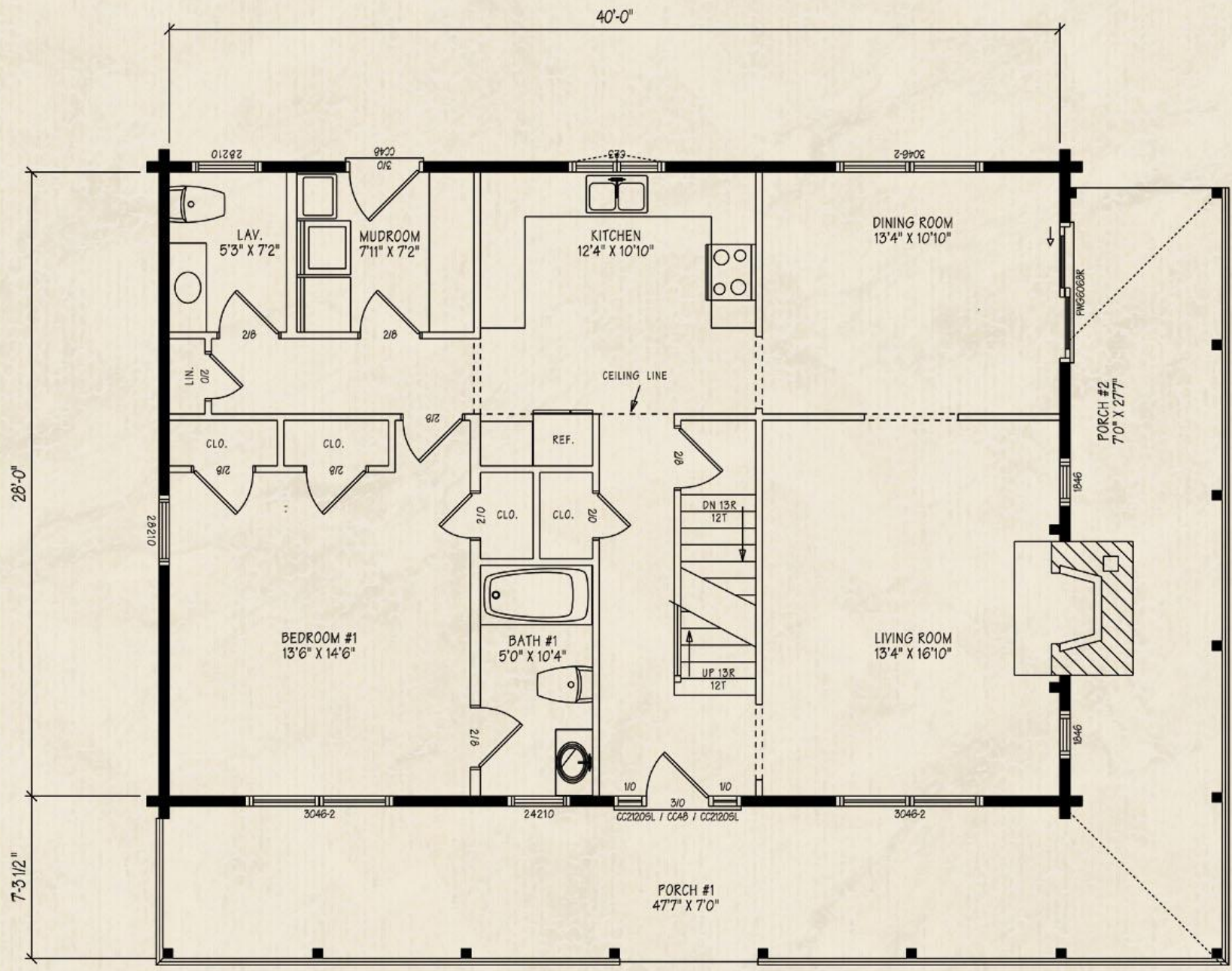
©2004 by N.L.H. Inc.

ADDRESS:	NAME:
405 BERRY WHITE	
PHONE:	DATE:
DESIGNED TO MEET THE 2003 INTERNATIONAL RESIDENTIAL CODES	

**Northeastern Log Homes**

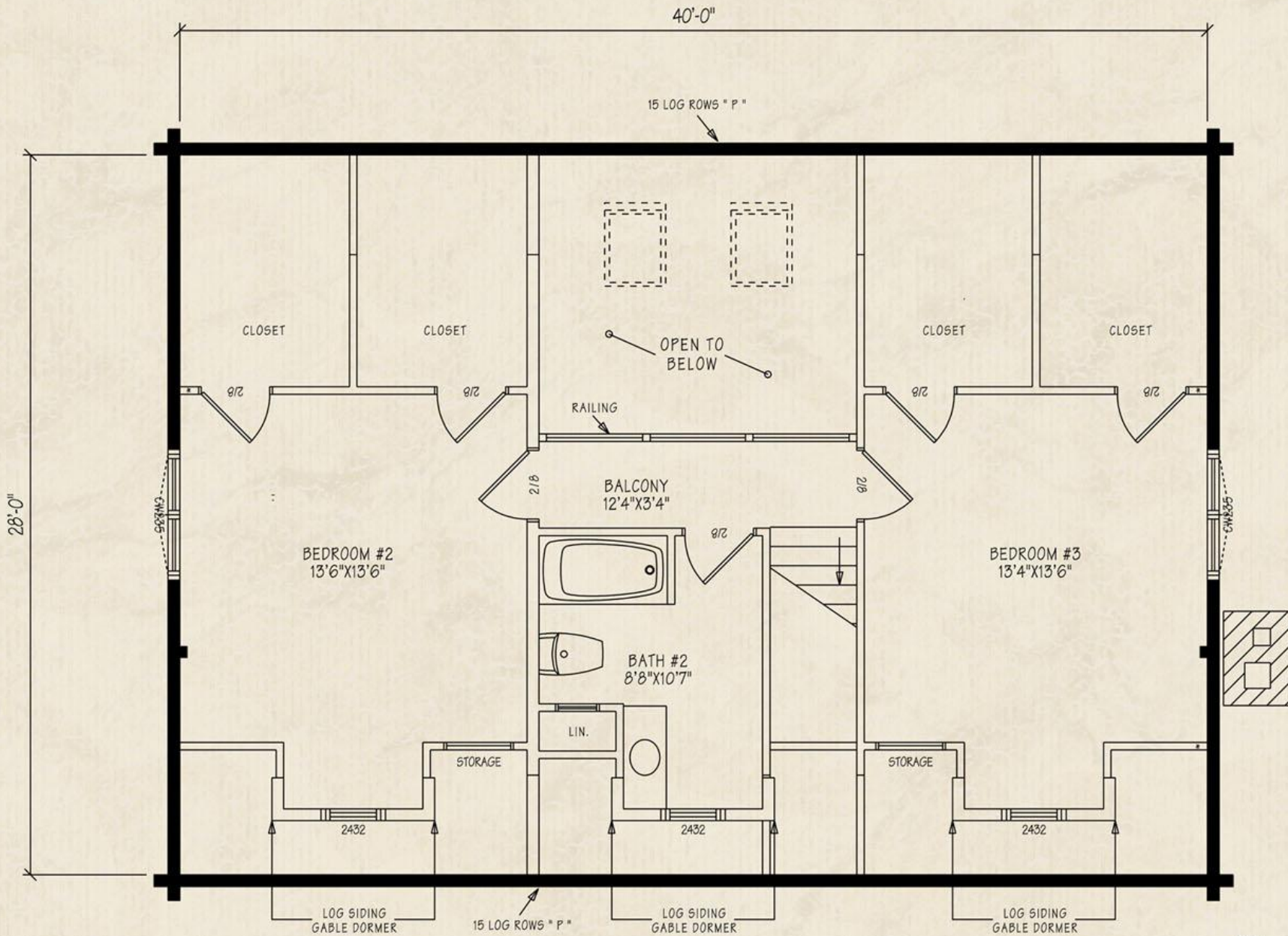
[info@northeasternlog.com](mailto:info@northeasternlog.com) 800-624-2797 [www.northeasternlog.com](http://www.northeasternlog.com)

\*Artist's rendering, photography & optional design ideas may vary from the standard model. Please always refer to the standard floorplan and consult the Premier Home Series Material List as to what is included. All plans, photography and images copyright NLH 2016



©2004 by NLH Inc  
 THIS PLAN IS COPYRIGHTED AND MAY NOT BE USED OR REPRODUCED WITHOUT WRITTEN PERMISSION FROM NORTHEASTERN LOG HOMES INC.

NO.	REVISION / CHANGE ORDER	DATE	BY	CHECK
WINDOWS	ANDERSEN 400 SERIES WHITE	MODEL		
DRN	PF	CODES	DESIGNED TO MEET THE 2003 INTERNATIONAL RESIDENTIAL CODE	
EXD	PROJECT NAME			
DATE	2-16-08	PLAN NO.	SHT. NO.	
SCALE	1/4"=1'-0"			1



©2004 by NLH Inc  
 THIS PLAN IS COPYRIGHTED AND MAY NOT BE USED OR REPRODUCED WITHOUT WRITTEN PERMISSION FROM NORTHEASTERN LOG HOMES INC.

REV.	REVISION / CHANGE ORDER	DATE	BY	CHKD
WINDOWS	ANDERSEN 400 SERIES WHITE	MODEL		
DRN.	PF	CODES	DESIGNED TO MEET THE 2003 INTERNATIONAL RESIDENTIAL CODE	
EXD.	PROJECT NAME			
DATE	2-16-09	PLAN NO.	SHT. NO.	
SCALE	1/4"=1'-0"			1